



## Part Number Listing: CC1400A, CC1400B

#	Item	Order #	Qty.	Pk.
1	<b>CC1400A:</b> Upper Housing Assembly <i>Does not include motor or PCBA</i>	87610+008+4610	1	1
	<b>CC1400B:</b> Upper Housing Assembly <i>Does not include motor or PCBA</i>	87609+008+4610	1	1
2	<b>CC1400A:</b> Lower Assembly (Dust Bin)	87610+008+4600	1	1
	<b>CC1400B:</b> Lower Assembly (Dust Bin)	87609+008+4600	1	1
3	Powered Hose	49009-01	1	1
4	Tool Caddy	49004-01	1	1
5	Shoulder Strap	49005-01	1	1
6	Floor Tool	73028-01-0327	1	1
7	Standard Slinky Hose	49008-01	1	1
8	Motor Kit <i>(includes motor, motor mount, 2-spacers)</i>	87610+008+4250	1	1
9	HEPA Filter	49003-01	1	1
10	Main PCBA	87610+008+4260	1	1
11	Dust bags 12 pack <i>(item not shown)</i>	PKCC12DW	1	1
12	Ratcheting Wand	73081-01-0327	1	1
13	Dusting Brush	73027-01-0327	1	1
16	Crevice Tool	72031-01-0327	1	1
17	Inlet Adapter	49027-01	1	1

## Part Number Listing: CC1500B

#	Item	Order #	Qty.	Pk.
1	<b>CC1500B:</b> Upper Housing Assembly <i>Does not include motor or PCBA</i>	87611+008+4050	1	1
2	<b>CC1500B:</b> Lower Assembly (Dust Bin)	87609+008+4600	1	1
3	Powered Hose	49009-01	1	1
4	Tool Caddy	49004-01	1	1
5	Shoulder Strap	49005-01	1	1
6	Floor Tool	73028-01-0327	1	1
7	Standard Slinky Hose	49008-01	1	1
8	Motor Kit <i>(includes motor, motor mount, 2-spacers)</i>	87611+008+4030	1	1
10	Main PCBA DC Unit	87611+008+4040	1	1
11	Dust bags 12 pack <i>(item not shown)</i>	PKCC12DW	1	1
12	Ratcheting Wand	73081-01-0327	1	1
13	Dusting Brush	73027-01-0327	1	1
14	DC Battery	49019-01	1	1
15	DC Charger	49018-01	1	1
16	Crevice Tool	72031-01-0327	1	1

# Part Diagram

## Accessories

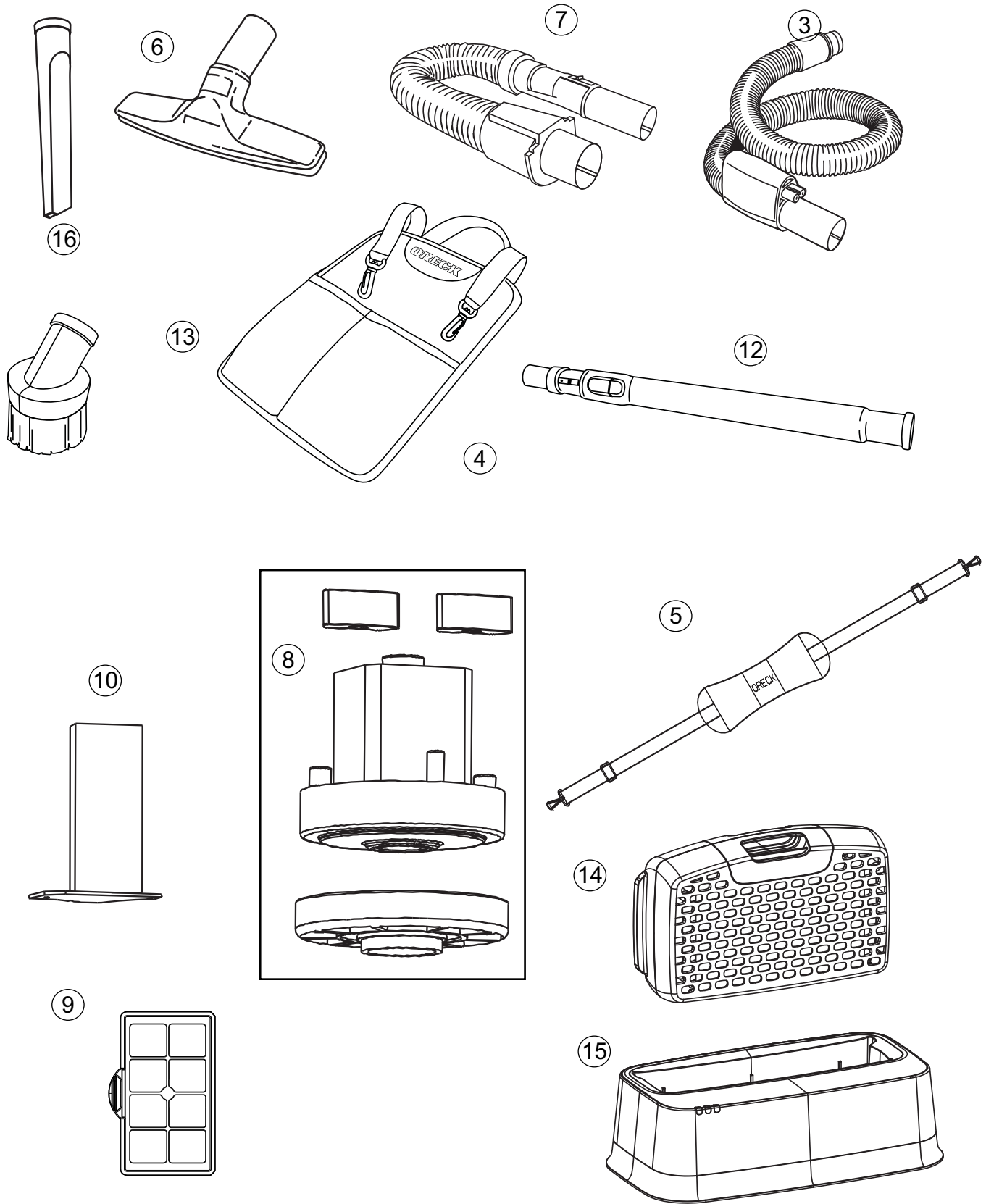
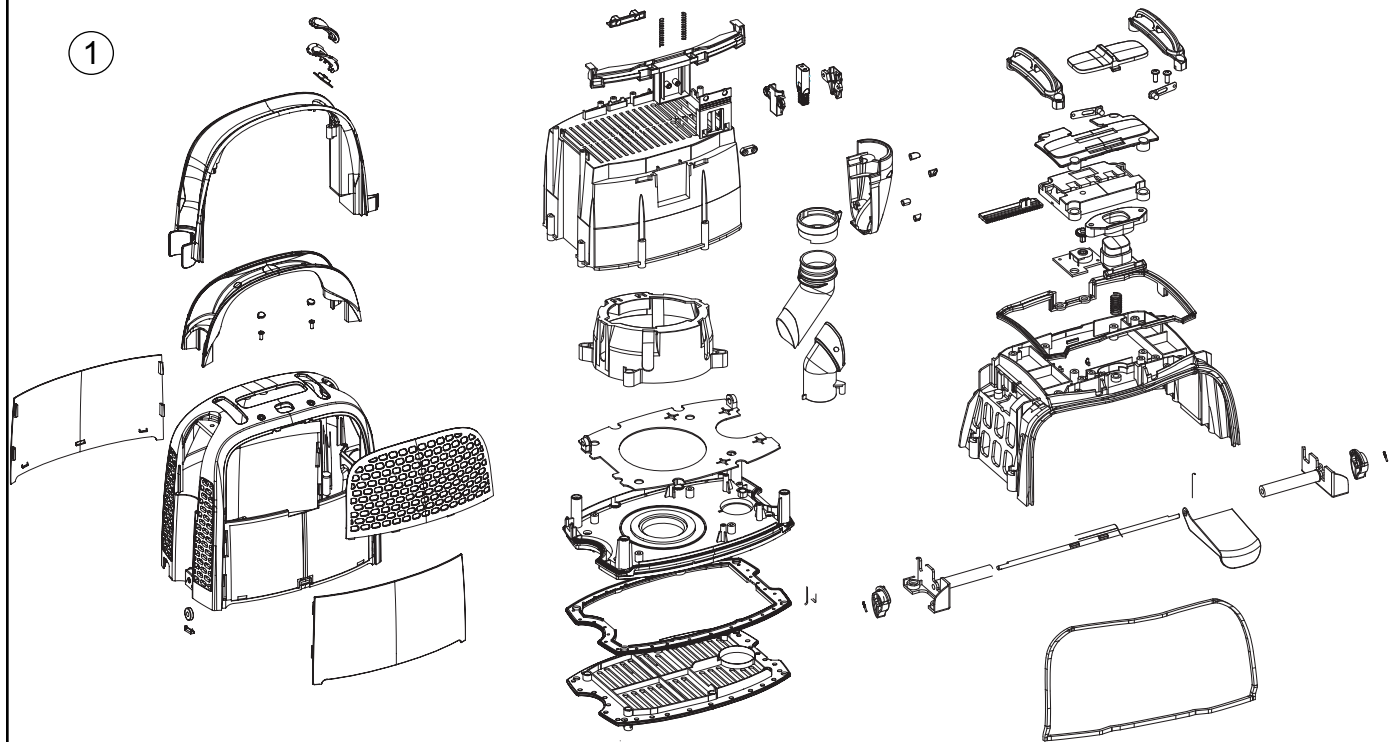


Diagram is for representation purposes only.

# Part Diagram

## Upper Housing Assembly



## Lower Dust Bin Assembly

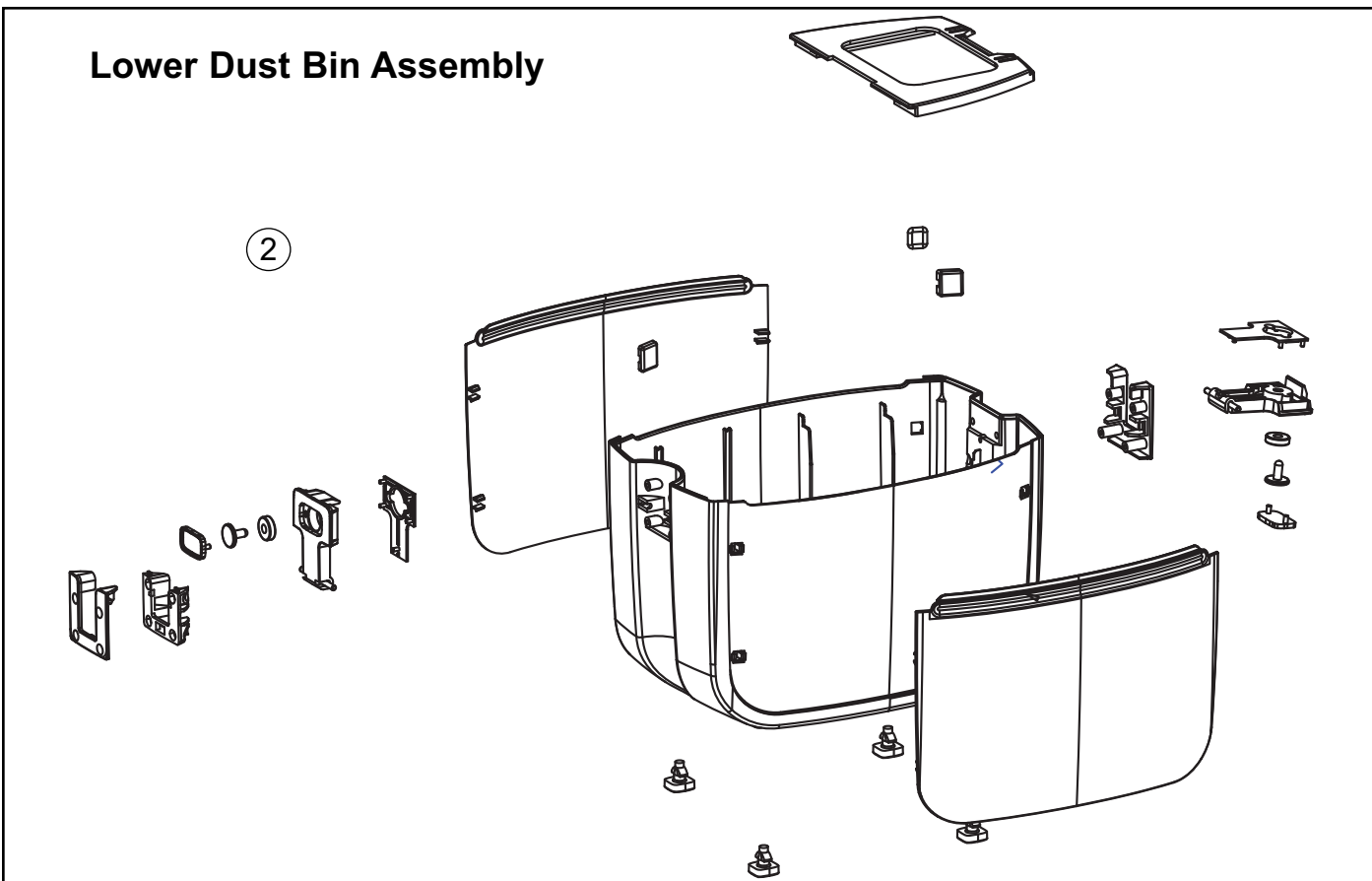


Diagram is for representation purposes only.

# Service Information

- Component configuration on exploded view may differ in case of specific versions. However, the actual components are distinguished by means of item and part numbers.
- If a repair has been made, make sure that all functions of the appliance are working correctly.
- Spare parts have been standardized as much as possible and the part may not be the exact replacement part.
- Do not use unit for prolonged periods w/full bag..

## Data Label

120 VOLTS 60 HZ 7.5 AMP CANISTER  
120 VOLTS 60 HZ 8.1 AMP W/FLASH

**ORECK**<sup>®</sup>  
COOKEVILLE, TN 38506 U.S.A.

MODEL: CC1400A  
TYPE 1  
Made in China  
Conforms to UL Standard 1017  
Certified to CSA C22.2 No. 243-01

DATE: 10036  
W: 3 YR Can  
5 YR Flash

← FOR HOUSEHOLD USE ONLY.  
CONCU UNIQUEMENT POU TYPE MENAGER.

Manufactured for Oreck Manufacturing Company,  
Cookeville, TN USA. Please read Owner's Safety and  
Operation Manual for safety and functional  
information. Call USA 1-800-989-3535 Canada  
1-888-676-7325 or go to [www.oreck.com](http://www.oreck.com) for help  
or more information.  
Patents Pending.  
HALO is a trademark owned by, and used with  
permission from, Oreck Holdings LLC.

INTERTEK  
E1V  
LISTED  
US  
3167504

**Type Code:** Represents product service revision number.

**Julian Date Code:**  
Represents date of manufacture.  
10 Represents the year.  
036 Represents the day in that year.

# ORECK<sup>®</sup> XL<sup>®</sup>

SIMPLY AMAZING<sup>®</sup>

## Service Parts List

---



**Oreck Flash/Edge  
Compact Canister**

**CC1400A  
CC1400B  
CC1500B**

REV D.