

ORECK[®] XL[®]

S I M P L Y A M A Z I N G[®]

Service Parts List

**Lightweight Series
Upright Vacuum Cleaner**

LW100

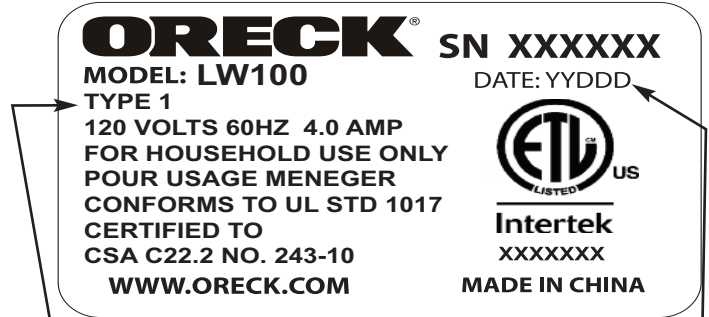


REV B, Disregard All Previous Revisions

Service Information

- ▶ Component configuration on exploded view may differ in case of specific versions. However, the actual components are distinguished by means of item and part numbers.
- ▶ If a repair has been made, make sure that all functions of the appliance are working correctly.
- ▶ Spare parts have been standardized as much as possible and the part may not be the exact replacement part.

Data Label



Type Code: Represents product service revision number.

Type 1: Initial Production

Julian Date Code:

Represents date of manufacture.

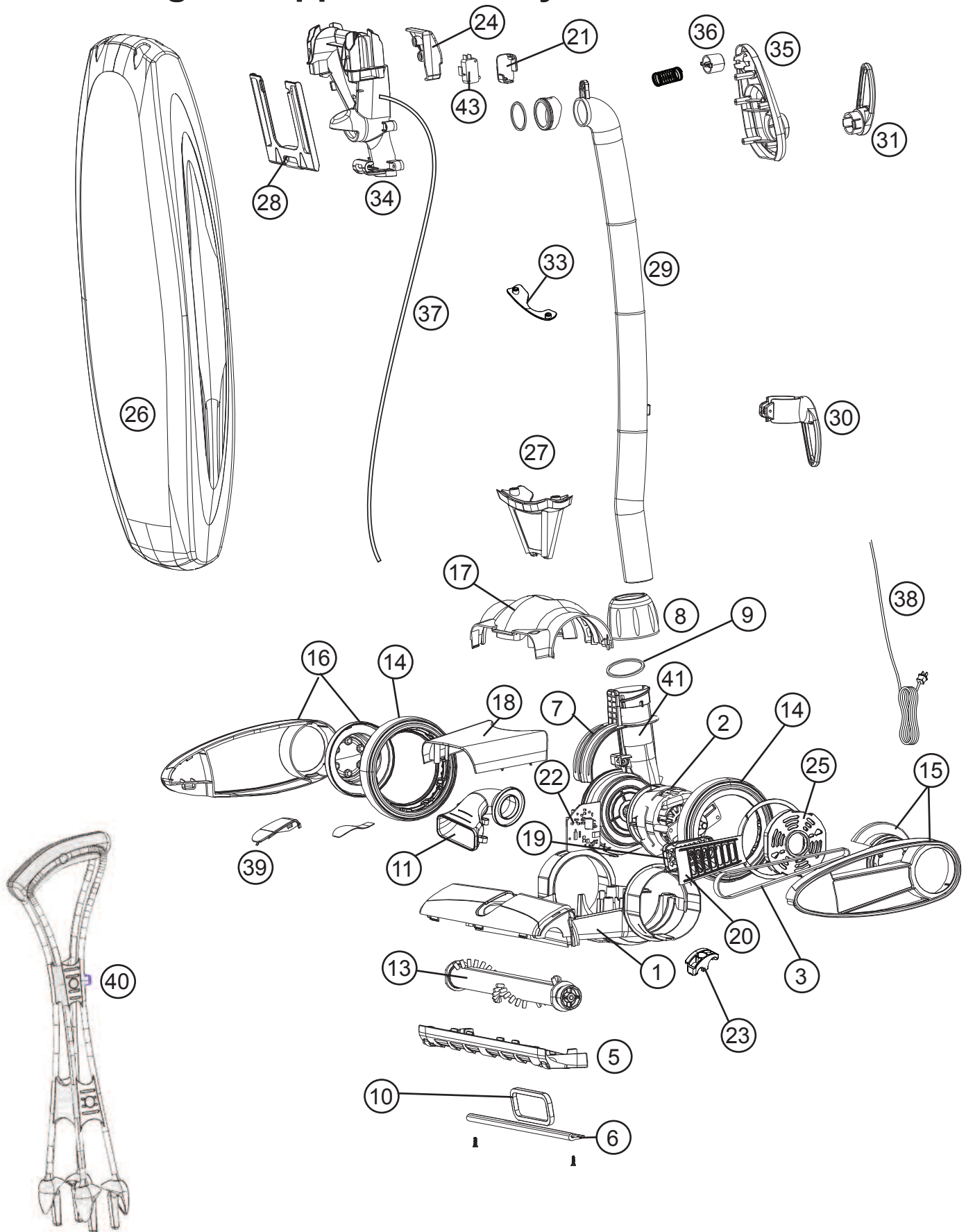
10 Represents the year.

061 Represents the day in that year.

Standard Fastener Hardware Listing

	PART FASTENER IS USED ON	FASTENER PART NO.	FASTENER DESCRIPTION	QTY REQ'D	TORQUE RANGE (in/lb)	QTY PER PKG.			
50	Soleplate	83149-01	#6-32 X 7/16" Flat Head Phillips Black	2	1.0+/-0.2	25			
51	Tunnel Cover(Fascia) Scroll Tongue to Scroll Motor Cover Upper Bracket Switch Mount Switch Wire Clamp	83150-01	#8-18 5/8" Black Pan Head	3 1 2 5 1 2	1.0+/-0.2	25			
52	Lower Cord Wrap Clamp Outer Bag Bottom Bracket	83151-01	#7x15 9/16" Black Pan Head	1 2	1.0+/-0.2	25			
53	Air Duct to Mag Base Detent to Mag Base Strain Relief to Mag Base	83152-01	#8-32 3/8" ZPS Pan Head	4 1 1	1.0+/-0.2	25			

Parts Diagram Upper Assembly



LIGHTWEIGHT SERIES UPRIGHTS

Part Numbers Listing: LW100

#	Item	Order #	Qty.	Pk.			
1	Baseplate, With Overmold	83000-01	1	1			
2	Motor	83001-01	1	1			
3	Flat Corded Belt	83002-01	1	1			
4	Detent	83003-01	1	1			
5	Sole Plate, With Wheels	83004-01	1	1			
6	Squeegee With Screws	83025-01	1	1			
7	Scroll Tongue <i>(Mounts to Fan Assembly)</i>	83057-01	1	1			
8	Collar Dirt Tube	83009-01	1	1			
9	O-Ring Dirt Tube Collar	83010-01	1	1			
10	Seal, Brush Chamber to Inlet	83015-01	1	1			
11	Inlet Duct	83016-01	1	1			
12	Seal, Felt Inlet To Fan	83018-01	1	1			
13	Brushroll Assembly	83020-01	1	1			
14	Rear Wheel Assembly	83027-01	1	1			
15	Left Track With Belt Tunnel and Hub Assembly	83032-01	1	1			
16	Right Track and Hub Assembly	83039-01	1	1			
17	Top Cover, Motor	83040-01	1	1			
18	Top Cover, Tunnel	83041-01	1	1			
19	Filter Holder Inlet	83042-01	1	1			
20	Belt Cover With Slots	83043-01	1	1			
21	Bracket, Switch Mount	83044-01	1	1			
22	PCB #1 Main	83045-01	1	1			
23	Clamp, LV/AC Wire to Base <i>(ETL Cover)</i>	83049-01	1	1			
24	Clamp, LV to Upper Bracket	83050-01	1	1			
25	Motor Support Disk	83052-01	1	1			
26	Bag, Outer	83053-01	1	1			
27	Pagoda (Outside)	83054-01	1	1			
28	Bag Dock	83056-01	1	1			
29	Dirt Tube	83058-01	1	1			
30	Dirt Tube Lower Cord Wrap	83059-01	1	1			
32	Lower Cord Wrap	83061-01	1	1			
33	Mounting Bracket Pagoda	83062-01	1	1			
34	Bracket, Upper Bag	83067-01	1	1			
35	Bracket, Power Button UCD	83051-01	1	1			
36	Power Button with Spring	83047-01	1	1			
37	Harness, Switch to PCB	83073-01	1	1			
38	Power Cord	83074-01	1	1			
39	Lens, Light LED, With PCB#2	83011-01	1	1			
40	Handle Assembly Complete	83080-01	1	1			
41	Fan Housing Assembly	09-83005-01	1	1			
42	Filter, Foam Belt Cover	83036-01	1	1			
43	Switch	83071-01	1	1			

